



**VERA DEVELOPERS PVT. LTD.**

Registered Office  
Bura Gujjar Road, Village KOTLI DEVAN, TEH.  
DISTT. Sri Muktsar Sahib -152026 (Punjab)

Site Office  
Old Kalka Road, Park Street,  
Near Patiala Chowk,  
Zirakpur -140603 (Punjab)  
P : +91 1762 509777

info@goldmark.co.in  
www.goldmark.co.in  
www.veradevelopers.com



*...Luxury for the class apart*

# Gold Mark

*...a richer life*

It is truly said, 'live a life that you are worth of'. We make it true for you at Gold Mark which is designed to serve a lifestyle that truly matches your status. Let others know how distinguishingly beautiful your world is. We welcome you to a world no ordinary, where your health, happiness and exclusive peace of mind are supremely achieved. It is a gateway to an ultimate luxurious resort like living, where your everyday is a rejuvenating vacation!

*Your Own Space*



# Location so strategic...

The Gold Mark stands upright at the best location of Tri-City. It has a smooth connectivity with the 4 State Highways (Chandigarh, Punjab, Haryana and H.P) and all other basic conveniences. Be it 5 Star Hotels, Schools, Malls, Retail, Railway Station, Bus stand, Airport or Hospital, all of these are in easily approachable limits.



## Location Map



*Your Grand Address*  
**At The Prime Location**



2 Km.  
Chandigarh.



2 Km.  
Panchkula.

### Radiance of 500 meters



Big Bazar, Pantaloons,  
Multiple retail stores



Domino's  
McDonalds



Zirakpur  
Bus stand



JP Hospital

### Radiance of 10 Km's



Upcoming  
Metro Station,  
Sector - 20, Panchkula.



Chandigarh  
Railway Station.



International  
Airport.



Elante Mall



Renowned  
Schools  
of Chandigarh



Renowned  
Education Institutes  
of Chandigarh

## THE TEAM BEHIND THE MASTERPIECE

### ZZ ARCHITECTS™ (Mumbai)

Among India's Top Architectural & Interior Design Firms Led by AR. ZUBIN ZAINUDDIN & AR. KRUPA ZUBIN

### Principal Architect

Being one of its kind project of Zirakpur, Vera Gold Mark has a unique architecture. The company believes that when building world-class edifices, it needs to tap into the world's leading talent in the field. That's why it has collaborated with a pool of extraordinary talents like ZZ Architects for its Luxurious Project Gold Mark. This Mumbai based design firm has an international reputation of Architecture excellence, confirmed by more than 50 design awards. Led by architects Zubin Zain-Uddin and Krupa Zubin, ZZ Architects specialize in large-scale residential and commercial master planning projects offering a complete range of services from Architecture to interior design for a holistic development of large sites. Known for the superior quality of work and its collaboration with some of the world's leading manufacturers, the firm has a lot to offer starting from unique designs to rich palette of the finest materials and products. Gold Mark has been conceptualized with an energetic and optimistic approach to create a niche habitat. The architecture of Gold Mark combines with innovation and finesse by focusing on specific elements that is a perfect synthesis of green eco-friendly landscapes, cutting edge designs that has bridged the gap between the painting and sculpture to recreate a lifestyle that treats nature with respect. The 8 acres Central Park at Gold Mark and aesthetically designed 14 Themed Gardens of New York embodies an extraordinary attention to detail and is both thoroughly modern & luxurious with high-end sophistication.

### EMC

Mech Consultants  
(Mumbai)  
Internal & External Services Consultants

For its Internal & External Consultants Vera Gold Mark had an array of options to choose from. Electro-Mech Company was the one that stood out of all options for its huge list of merits. Electro-Mech is a fast Growing, Multi-discipline Building Engineering Design Consultancy Organization with well qualified, competent and highly experienced technocrats, backed by a dedicated team of engineers and designers to optimize time, efficiency, resources and manpower to deliver comprehensive building engineering solutions.

The Company has rendered consultancy with proven expertise in the field of Electrical, Mechanical, HVAC, IBMS, Fire Fighting, Industrial Utility Services for Residential, Industrial, Institutional & Commercial buildings. Its range of consultancy also includes Plumbing, Storm Water & other Utility Services. The company follows a concept of Sustainable Design which is related to Green Building Design, and involves the use of techniques that are inconformity with nature, rather than against it. Well designed sustainable design systems go a long way in reducing operational costs by avoiding resource wastage.

### NNC DESIGN INTERNATIONAL

CONSULTING STRUCTURAL ENGINEERS  
(New Delhi)

Vera Gold Mark has brought on board a renowned named in Structural Engineering, NNC Design International, New Delhi. The Principal has more than 13 Technical Paper which have been published in Leading Journals across the globe.

Along with that they are accredited members of The British Masonry Society, London and The Institution of Engineers, India.

They are a multidisciplinary engineering company with massive strength of experience, knowledge, manpower and latest engineering softwares that can meet the tightest deadlines and provide a quality output at Vera Gold Mark.



#### LANDSCAPE

Mr. D.S. Sharma - More than 100 National Awards. Certified from Six Sigma by International Quality Federation (USA)



#### LIGHTING CONSULTANT

ADLS (Delhi)

Every Light has been placed at specific postilion with specific angle to create a masterpiece with light.



#### PMC

Project Management Consultants

Ensuring that the 7-Star Project created will keep on offering 7-Star Services.

# MIVAN CONSTRUCTION TECHNOLOGY

## 3S SYSTEM OF CONSTRUCTION

- Safety
- Strength
- Speed

**Gold Mark** promises you safer and secure homes. We have moved way forward from traditional modes of construction. With adoption of European Construction Technology, apartments at **Gold Mark** are far safer. A construction without bricks is itself a unique feature of **Gold Mark** apartments. Every apartment here has increased durability, no leakage accompanied with smooth finish & a forever new look, as seen in highrise towers across the World.

Not just this, there are many other excellent features of Mivan Construction which makes Gold Mark the first of its kind in the Northern Region.

- ✓ Higher Carpet Area
- ✓ Joint Less Apartment
- ✓ More Seismic Resistance
- ✓ Increased Durability
- ✓ Uniform Quality of Construction
- ✓ Smooth Finishing of Wall & Slab
- ✓ Reduced Leakages
- ✓ Negligible Maintenance



Pouring Cement



Mivan Structure

Without Bricks  
Complete  
**RCC**  
Construction

Scan The Code To See Video





Aesthetically Splendid Entrance  
*...a richer life*



Grandeur at its best  
*...a richer life*



Drop off to pick up the pleasurable living

Well organized Pick and Drop Air-conditioned Station lets your guest know the easy way to you. The station at the Residential Entrance Plaza is seasoned and has adorned surrounding to catch the eye of the passerby.



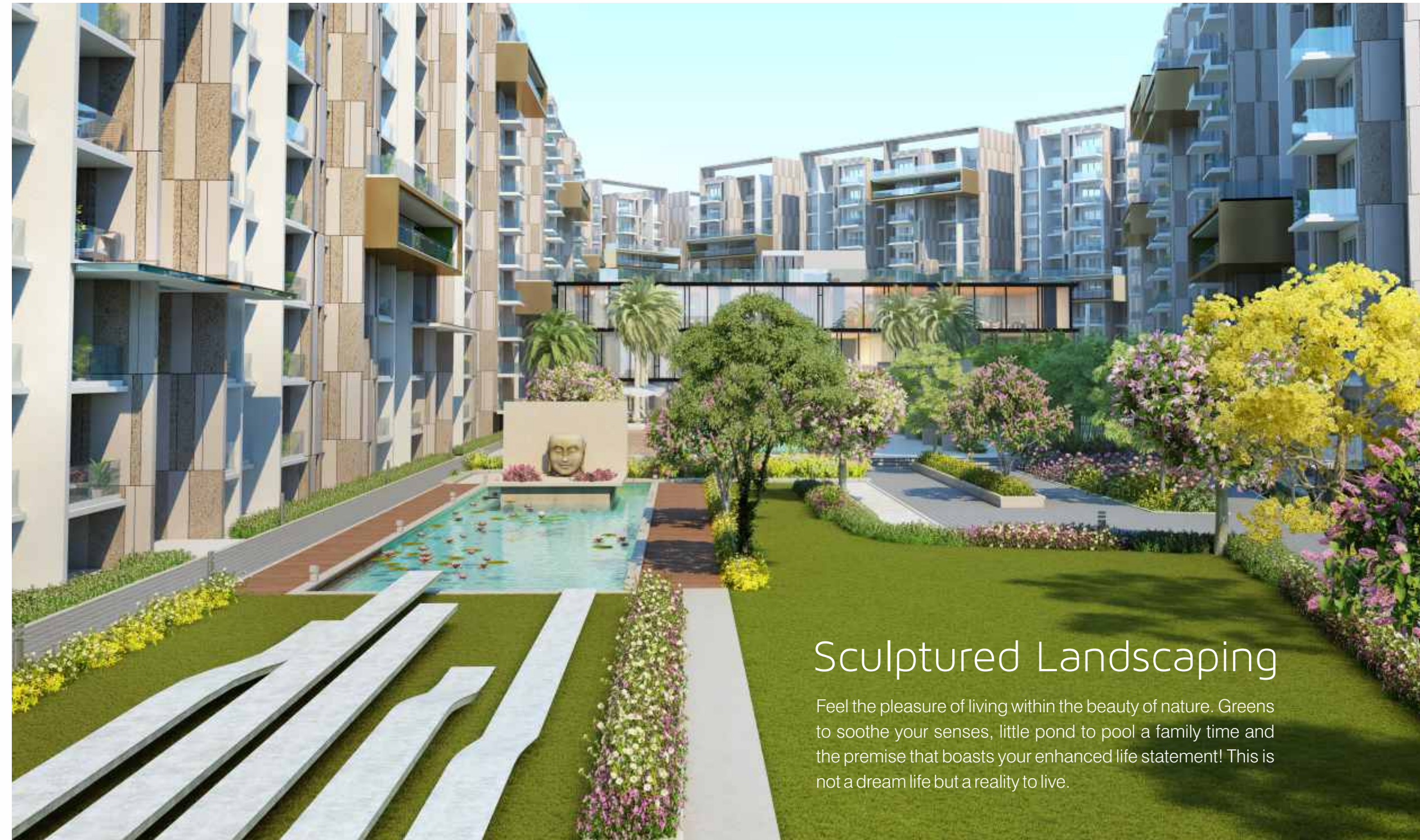
*Vehicle Free Verdure Residential Podium*

More than **70%** apartments open to green

Do all you always wanted to do in style in this exclusive yet vibrant neighborhood resplendent with beautifully landscaped garden. Watch your children revel in fun at conveniently located parks. Unwind after a hard day's work and spend a relaxed evening in the nature's rescue. Come, rediscover yourself at the Gold Mark.

*Unwind a  
new you*





## Sculptured Landscaping

Feel the pleasure of living within the beauty of nature. Greens to soothe your senses, little pond to pool a family time and the premise that boasts your enhanced life statement! This is not a dream life but a reality to live.



## Jogging Track on Podium

Pamper your health and keep yourself fit at the Jogging track with Ambient Music and Motion Sensor lights.



## Giving Back To Nature

Luxury usually comes at a high price, not only financially but environmentally too. Gold Mark is all set to change this high cost to the environment, combining luxury living with eco-friendly technology.

Gold Mark's architectural idea is to metamorphose the condominium into a green, dense and hyper-connected ecosystem and to raise awareness of green sustainable architecture to fight against global warming and propagate eco-friendly living for our next generation.

## A Green Building Initiatives for A Sustainable Future

- Brickless Construction to save environmental pollution hazards.
- Solar based Lighting in all common area.
- Rain Water harvesting systems
- Sewage treatment plants to recycle water for gardening
- Organic Waste Composter to make manure for plants.
- e-charging stations to power your vehicles in the future.

# 4 Theme Garden

a candy for your five senses!



Peace Garden



Rose Garden



Spring Park



Sculpture Garden



Private Garden



Sports Garden



Concept Garden



Perennial Garden



Wild Flower Garden



Zen Garden



Step Bamboo Garden



Buddha Garden



Kitchen/Vegetable Garden



Herbs Garden



*...the joy of living in nature*

## Classic Club House ....more than 20,000 sq.ft.

Rejuvenate with a cool splash or work out your stress at the gym. The fine club house will cater to all the leisure needs with most modern facilities and equipment.

Not just a destination but a statement of perfection, the clubhouse has been created with emphasis on exclusivity, Luxury and privacy. Separating the building into three principal volumes this clubhouse delivers an experience of a lifetime. Divided into housing, entertainment, health and sports programs, the club's geometry makes it more convenient.

- Gym
- Family Pool
- Yoga Room
- Restaurant
- Banquet Hall
- Movie Theatre
- Morning Café

- **Indoor Games**
  - Air Hockey
  - Pool Table
  - Table Tennis
  - Carrom Board
  - Poker Set

- **Outdoor Games**
  - Cricket Pitch
  - Basketball
  - Badminton

- **Daily Amenities**
  - Chemist Shop
  - Grocery Store
  - Bread & Bakery Shop
  - Salon

...for a fuller life

When everything  
else is not enough,  
clubbing gives  
you more



### The Classic Club- aurum

The Club with members only access is yet another elite zone @ Gold Mark. Aesthetically luxuriating lounge to de stress your busy days is what this club is all about. It offers exclusive privileges in services and amenities like never before.



*Olympic Length Swimming Pool*

*...Clubbing in Style*

# Squash Court

Play your heart out at the Squash Court Matching international specifications



*...Clubbing in Style*

Fine Dine Restaurant



Party Hall



Movie Theater



Gym



*...Clubbing in Style*

# Indoor Games

Air Hockey



Table Tennis



Why go out when Fun is in-

At Gold Mark, we promise a lively and revitalizing lifestyle. Not every weather or every mood allures us to go out in the open to spend some worthy moments. An indoor game zone is an answer to those days. A gullible family time on the game board is a moment worth living. A checkmate challenge to your friend or making your kids explore their interest in zone, all of it is going to brighten the pages of your life.



Poker Set



Pool Table



Carrom Board

*...Clubbing in Style*

# Daily Amenities

Your everyday made easy

For your those last minute grocery needs, of that urgent medicine you need at an odd hour of the day, you don't need to worry anymore. Every basic supplies is just a step away from your door. To buy those fingerlicking desserts, cookies or cakes for your celebrations or to wear that perfect look for your parties, let travelling distances for bakeries or salons be a story of the past.

Chemist Shop



Grocery Store



Bread & Bakery Shop



Salon

*...Multiple Stores with Club House*

## Gold Mark.

Gold Mark... a designed dream where happiness turns true, a place that glitters like gold when you are in search of a splendid lifestyle. It is one of the luxurious residential project located at a well-connected landmark. Your space @ Gold Mark is much more than a house of all luxury and beauty. It has a lustrous array of comforts to make your living effortless. The residences are designed in a way for sufficient natural light and ventilation. Besides this, Gold Mark also boasts 3 level of exquisite landscaping that includes lawns, fountains and many other attractions that makes life worth living.

- 75% Open Space
- High-End Luxury Features & Facilities

*internal  
layout plans*



# 3D VIEW

## KING SIZE 3BHK PREMIUM

Super Area-2170 Sq. Ft.



# KING SIZE 3 BHK PREMIUM

Super Area-2170 Sq. Ft.



\*T&C Apply

\*Conceptual Image  
\* All sizes are mentioned with walls

# 3D VIEW

## KING SIZE 3 BHK LUXURY

Super Area-2310 Sq. Ft.



# KING SIZE 3 BHK LUXURY

Super Area-2310 Sq. Ft.



\*T&C Apply

\*Conceptual Image  
\*All Sizes are mentioned with walls

# 3D VIEW

## KING SIZE 3+1 BHK ULTRA LUXURY

Super Area-2890 Sq. Ft.



# KING SIZE 3+1 BHK ULTRA LUXURY

Super Area-2890 Sq. Ft.



\*T&C Apply

\*Conceptual Image

\*All Sizes are mentioned with walls

# 3D VIEW

## 4+1 BHK KING SIZE LUXURY

Super Area-3160 Sq. Ft.



# 4+1 BHK KING SIZE LUXURY

Super Area-3160 Sq. Ft.



\*T&C Apply

\*Conceptual Image

\*All Sizes are mentioned with walls

# 3D VIEW

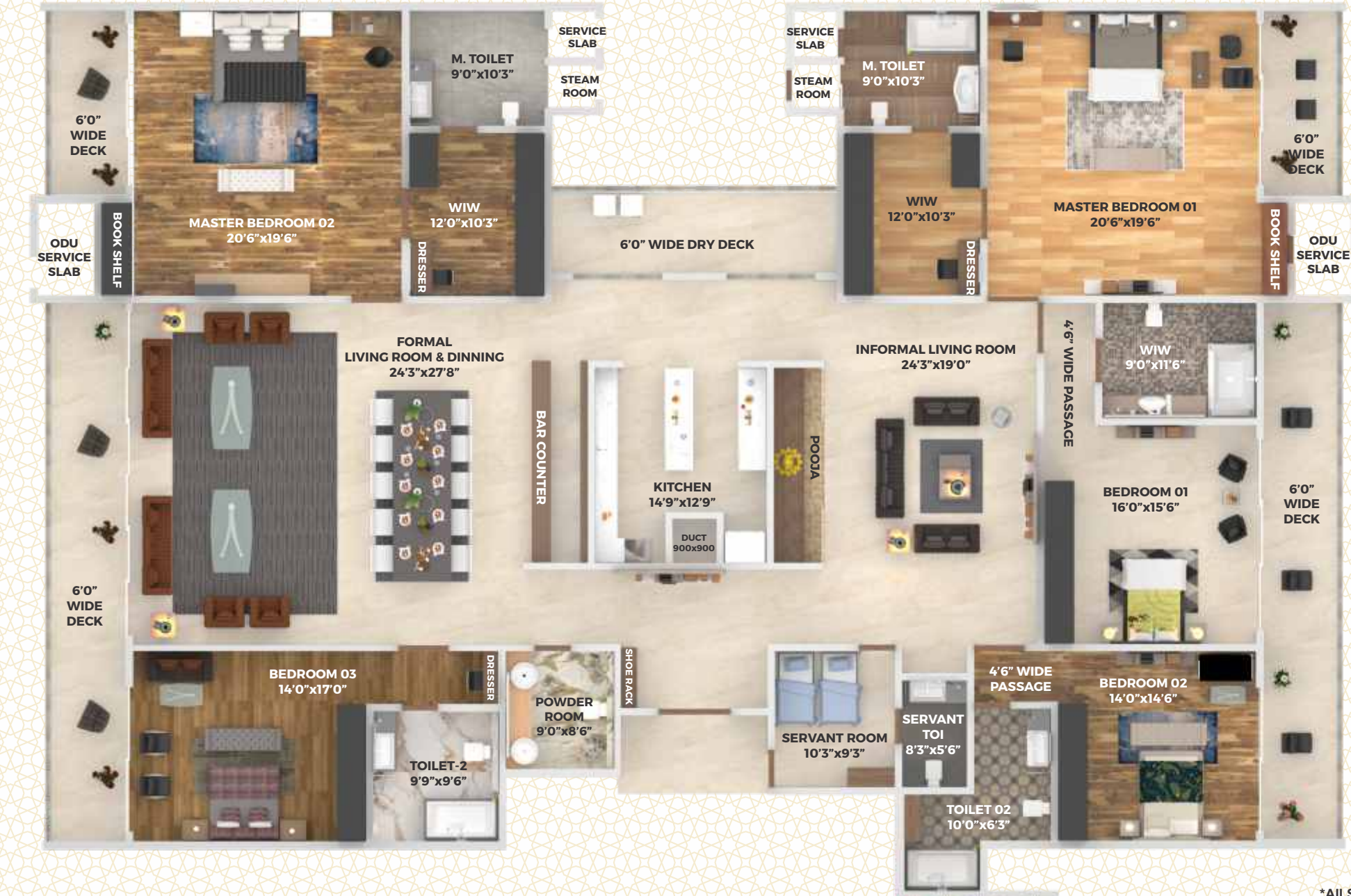
## 5+1 BHK PENTHOUSE WITH TERRACE GARDEN

Super Area-5880 Sq. Ft.



# UNIT PLAN 5+1 BHK PENTHOUSE WITH TERRACE GARDEN

Super Area-5880 Sq. Ft.



\*T&C Apply

\*Conceptual Image

\*All Sizes are mentioned with walls

a **home**



is built with love and dreams.



The Magnificent Lobby  
at each Floor

Living

r



m



## *A Living Room that's full of life!*

Vast and vivacious is what you step into when you enter the house. A living room to suit all your mood. Plenty of space to entertain and inspire your guests and a quiet space to enjoy a view with peace. Modified ceilings, impressive art sculptures and astounding floor fittings gives your house not less than a palatial look. Nothing better than this perfect brew of relaxing and socializing at one grand space.

# Bedroom

Unwind and Relax in your



## *Your bedroom, its breathtaking!*

The king size stupendous bed on an exquisite flooring and contemporary wall art to add to the glam is all what your personal space is about. Detailed beautifying concept on lights, lamps and furniture are integrated to bring out a seamless flow. Your picture perfect room is in harmony with your dreams! Bedrooms offer a retreat from the stresses of everyday living. We make your bedroom relaxing and refreshing with inspirations inbuilt to make your sleep tight and mornings perfectly right!.





# kitchen

.... the way to your man's heart



## *Italian Kitchen, Heart of your home!*

Your kitchen should be the true beating heart of your home, and that's what these kitchens are designed to be. The renowned Italian kitchen manufacturer is dedicated to creating collections that are beautiful and practical, and each one tells its own story. A perfect dining place adjacent to the kitchen where a sumptuous mealtime becomes the most irresistible part of your day. Carefully designed for you, your home and your lifestyle, these kitchens are not only practical and functional, but are perfectly aligned to your requirements. The attractive designs with king-size area adorned with a contemporary finish for cabinets as well as class apart dine in space speaks loud of your good times.



The Luxurious  
**athroom**

...where bathing is all pleasure, not just a routine



*Bathrooms beyond beauty*

An exquisite bathroom with a unique Belle Époque appearance is designed to bridge the gap between today's modern minimalist and yesterday's period pieces. Unwind yourself and soothe your senses with the sinking in serenity feel. The space is beautifully fashioned with ceramic sanitary ware, decadent free-standing baths and superb showering masterpieces set either as freestanding options on luxury traditional feet, or within a bath. Every corner is lovingly detailed and hand finished with exceptional care using the finest materials and creative thoughtfulness. Outstanding fittings and accessories in a tempting finish complete the luxury concept and set the look apart as the most acclaimed in bathroom styling.

## Premium Specifications



- Italian Tiles in Living and Dining



- Wooden Flooring in Bedrooms



- False Ceiling



- LED Lights



- Motion Sensor Lights in Kitchen & Washrooms



- Gas Leakage Detector



- Metered Gas Pipeline



- Luxurious Bath Fittings



- Water Geysers



- Exhaust Fans in Washrooms



- Ceiling Fans



- Wall Hung Toilet Seat



- Counter Top Wash Basin



- Anti-skid Flooring in Washrooms



- Wall to Wall Tiles in Washrooms



- Video Door Phone



- UPVC Doors with Mesh Slider



- Premium Door Hardware



- Premium Modular Switches



- Premium Emulsion Paints

## Renowned Brands

Electric Switchgear



Electrical Switches & Plates



LED Light Fixtures - Lamps



Toilet Chinaware



Toilet CP Fittings or Accessories



UPVC Windows



Door Hardware



Paints



Fans



Geyser 5 star



Note: The above Mentioned Brands or Similar Brands shall be Used.

## Luxury Specifications



• Modular Kitchen Cabinets



• Modular Wardrobes in Bedrooms



• Chimney with Hob



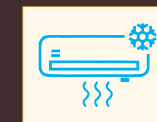
• RO Purifier



• OTG and Microwave



• Granite Kitchen Counter Top



• Inverter Technology Hot & Cold Split AC



• Stainless Steel Double Drain Board Sink With CP Fittings

## Renowned Brands

Kitchen Appliances



Inverter Technology Split A/C



RO Water Purifier



Note: The above Mentioned Brands or Similar Brands shall be Used.

## Plethora of Unmatched Add-on Services



Resident Manager in Each Tower



Driver's Lounge



Laundry Room with Ironing Station



High Speed Elevators



Automatic Car Wash Bay



24X7 Ambulance Service

## High-end Security



100% CCTV Monitoring



Advanced 3-in-1 Entry System



Video Conferencing Phone



Separate Entry For Housekeeping & Labour



Gas Leakage Detectors



Smoke Detector With Automatic Fire Fighting System



Emergency Panic Switch

# Kids zone

What more could be expected when your kids find themselves more than occupied in their world of joy surrounded by toys, rides and play activities just a step away from home! Nothing better can cheer up your little ones. A safer & supervised play zone is now an arm away from your doorstep.



*...charge up your Sporty Spirit*

## The enchanting evenings at Gold Mark

Where your days are full of serenity and beauty, the evenings are supposed to be more majestic and enchanting. When the lights brighten the city after sunset, you will find yourself into a mesmerizingly new world. The finest quality of lighting is weaved perfectly with its precise placement to paint a dreamy picture of reality on your canvas of life. The idea is to add to the decor and lifestyle of the residents here. It's not about glaring brightness, but making the ambience welcoming and stylish in line with your mood. Be it soft, romantic or party setting, the finesse is found in every little corner touched with grace and stature. Well planned lighting of Vera Gold Mark makes you experience not less than an evening in Paris!



# Post Possession Services



## Property Management

We at Gold Mark understand your urge to have a perfect and well maintained house. Thereby we have hired on board proficient professionals from hospitality agency who expertise in property management. Be it your garden or roof every nook and corner of your space is taken good care of. Just a call away, they are always available to resolve your problems.



## Post Rental Services

Buy your dream space at Vera Gold Mark. If you decide not to make it your permanent address, renting it out is always a good option. It gives you returns on your investment. We understand that going through detailed paper work and rent security is not that handy. Hereby, we offer you Post Rental Service where we find the ideal Renters for you at the best possible rent. Not just we do the Rent Agreement and other paperwork for you but also we collect the rents and securities on your behalf.



## Business Centre

When you work at home away from office, a need of personal space is unavoidable. This business centre is for those hours when your work requires an urgent attention when you are at home. A classic conference room , a subtle tea lounge combined with the basic facility of decked up pantry and washrooms is what this Business centre holds for you. You can well impress your clients with the contemporary interior added on with projectors, Wi-Fi Connectivity, Intercom, Music Systems and much more.



## Customer Portal & Social Connectivity

At this era where the world is on internet, we hop a step further in bringing your societal living to the virtual world. An unique Id and password for every member of Gold Mark is generated. You can login to this Customer Portal and keep a check on all your utility bills till date like Electricity bill, Water bill, Phone bill, Gas consumption etc helping you keep a track of the payments and due dates. This unique service doesn't end here. The portal also makes you aware of all the recent activities of the society like festival celebration, get-togethers, notices, extra curricular activities etc. This social connectivity also lets you stay in touch with other members of the society.



## 24x7 Service Centre

Hassle free living is on top priority at Gold Mark. In everyday life , a fused light , a dripping tap, a broken table leg or the maid that goes on off without notice and much more is a story of every house. We believe in handling all those problems of yours, letting you sit back and relax. Whether you need a plumber, an electrician, a carpenter, a house maid, a technician, beautician or a doctor on call, we keep them available for you 24x7.



## Features and Facilities for a Luxurious Life:

### Exterior

- Mivan Construction
- Vastu Compliant Architecture
- Peripheral Jogging Track
- Grand Parents Park
- Children Park with Swings
- 14 Types of Theme Gardens
- Open Amphitheater
- Air Conditioned Pick & Drop Station
- Luxury Water Features
- Service Desk in Each Tower
- Laundry Room with Ironing Station
- Driver Lounge
- Car Wash Bay
- High Landscape Compound Wall
- Under Ground Car Parking
- Practice Cricket Pitch
- Advance Safety & Security System
- 24 X 7 Ambulance Service
- Fire Fighting System
- Advance Building Management System
- High Speed Elevators
- 24 X 7 Power Backup
- 24 X 7 Stabilized Power
- Earthquake Resistant Structure
- Residential Entrance Plaza
- Lounge Pool
- Lounge Seating in Landscape Area

### Interior

- Video Door Phone
- Italian Tiles Flooring
- Modular Kitchen
- Pre Fitted RO
- Pre Fitted Gas Pipeline with Separate Meter
- Gas Leakage Detector in Kitchen
- Chimney with Hob
- Garbage Chute with Sprinkler System
- Luxurious Bath Fittings
- False Ceiling
- Exclusive Led Light Fittings
- Pre Fitted Split AC- 5 Star Rated
- UPVC Fittings
- Modular Wardrobes in all Bedrooms
- Exhaust Fans in Washrooms & Kitchen
- Sensor Motion Lights in Washrooms & Kitchen
- Pre Fitted Geysers- 5 Star Rated
- Separate Dual Meter for Power Backup
- Internet & Wi-fi Connectivity
- Emergency Panic Switch in all Apartments
- Entrance Foyer wall in every Flat

### Club

- Family Pool
- Yoga Room
- Gym
- Restaurant / Cafe
- Banquet Hall
- Movie Theatre
- Indoor Games
  - Air Hockey
  - Pool Table
  - Table Tennis
  - Carrom Board, Poker Set, Chess, Magnetic Dart
- Outdoor Games
  - Cricket Pitch
  - Basketball
  - Badminton
- Daily Amenities
  - Chemist Shop
  - Grocery Store
  - Bread & Bakery Shop
  - Salon
  - Morning Cafe



# VERA Group

With two decades of glorious experience in creating masterpieces in the Punjab Region, Vera Developers Pvt. Ltd. has become the most trusted real estate brand in the Northern Region. We have delivered more than 50 Lakh Sq. Ft. area of real estate projects to more than 5000 satisfied customers across Punjab. Our company has a range of under construction projects of 70 Lakh Sq. Ft. area in well-planned urban sectors across Tricity & Punjab. In addition, there are another 50 Lakh Sq. Ft. for our upcoming projects. A closer look at the completed and ongoing projects by the company in the last few years reveals our strong focus on thoughtfulness, benchmark quality, customer centric approach, timeless values, transparency and innovation.

The company has partnered with specialists from all over India working on various aspects including design, landscaping, engineering and structural strength of each of the developments. In-house dedicated separate divisions for construction, sales, marketing as well as accounts help us to deliver a project from conceptualization to completion. In other words, everything from quality construction, aesthetic design, machinery and high-class interiors is done in-house.

We also have an experienced customer service team which regularly interacts with customers and is responsible for assisting them through the entire sales & after sales process. Vera Developers as an organization is highly focused on delivering international quality products in a timely manner with utmost perfection.

## The World of VERA

### Other Ongoing Projects



Lok Awas is the most Affordable Project & an excellent find for those looking for budget residential properties. Situated at the helm of the fastest appreciating property location in Mohali, these homes are connected to the 200 ft. wide Airport Road, schools, business districts & so on. Gated Community with a range of features at Lok Awas makes it a perfect township you would proud to call your home.

[www.lokawas.com](http://www.lokawas.com)



Royal City Plots by Vera Developers bestows an opportunity to experience the prestige of having space in Fazilka. The ultimate state-art living complex is beautifully set on 60 feet Abohar Road with a range of services including the best possible connectivity to important places.

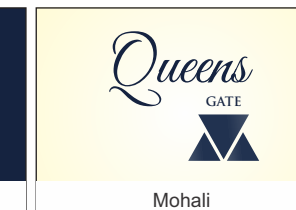
[www.royalcityfazilka.com](http://www.royalcityfazilka.com)



Designed by the best and built using the finest material available, the Prestige Towers blend every element of aristocracy. Situated moments away from Mohali's finest schools, hospitals and shopping malls, Prestige Towers is conveniently close to the best of everything that the capital has to offer.

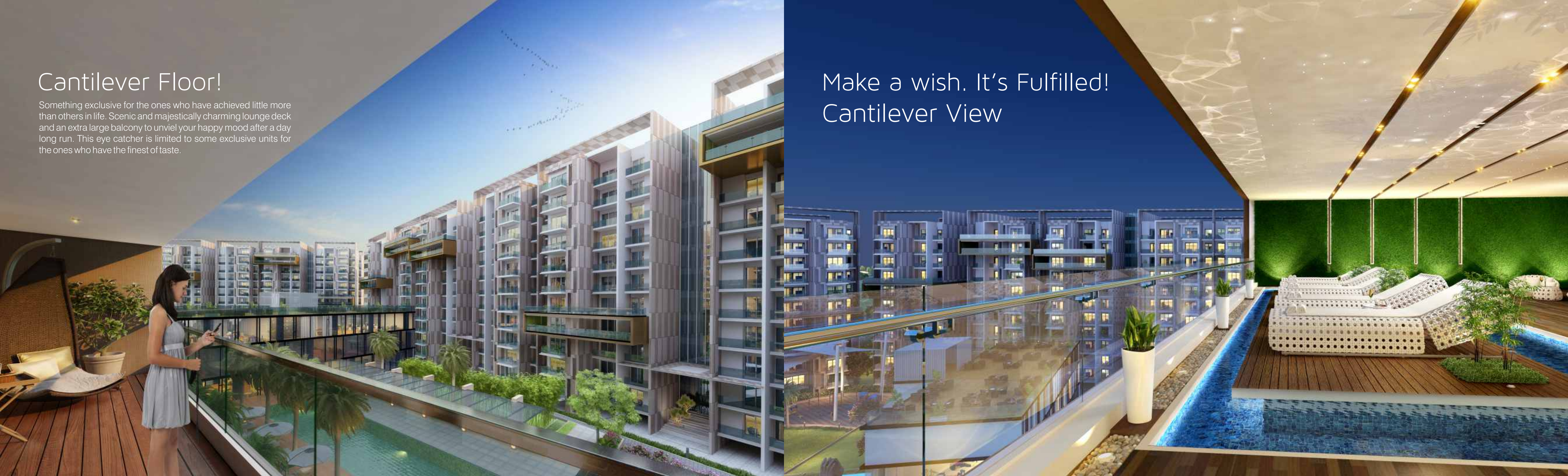
[www.prestigetowers.in](http://www.prestigetowers.in)

### Our Upcoming Projects



## Cantilever Floor!

Something exclusive for the ones who have achieved little more than others in life. Scenic and majestically charming lounge deck and an extra large balcony to unveil your happy mood after a day long run. This eye catcher is limited to some exclusive units for the ones who have the finest of taste.



## Make a wish. It's Fulfilled! Cantilever View

## Approval by Authorities

 RERA Approved	26/09/2017	PBRERA-SAS79-PR0117 PBRERA-SAS79-PR0541
 Map Approval	07/04/2016	DTP/2016/659
 Change Land Use	19/01/2016	DLU/DDLG/PTL/ 2016/1204
 Environment Clearance	20/11/2015	SEIAA/2015/6984
 Pollution Clearance <small>(Air/Water/HWM)</small>	18/08/2016	CTE No.4329294
 Fire Clearance	12/04/2016	D/B/ 148
 Height Clearance	13/10/2015	Air HQ/S 17726/4/ATS

*Disclaimer: In the interest of maintaining high standards, all floor plans, layout plans, areas, dimensions and specifications mentioned are indicative and are subject to change as decided by the company or by any competent authority. This brochure is purely conceptual and not a legal offering.*



Architectural Excellence and Thoughtful Urban Planning by Zubin Zainuddin and Krupa Zubin, ZZ Architects, Mumbai

Vastu Compliant Architecture

Total Area- 12 acres (approx.)